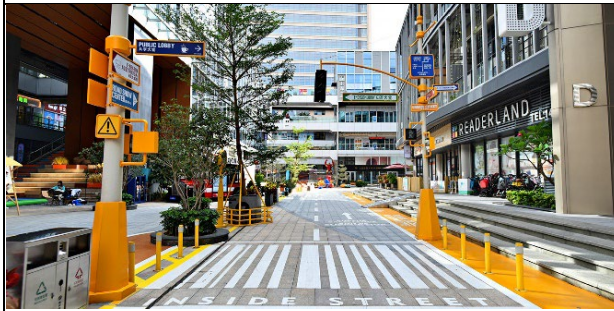


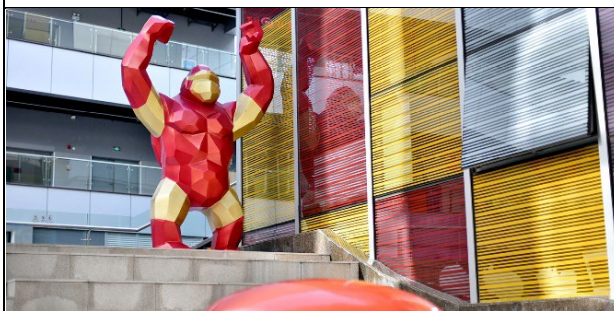
【Shenzhen】Xinzhou Tongchuanghui
Find the best Euro-American street snap hotspot!



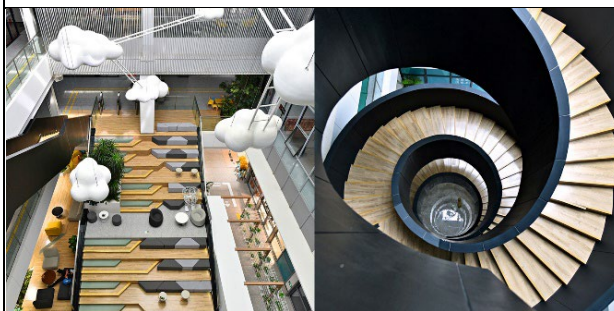
It is totally unexpected to find a photo hotspot among the high-rise office buildings in Futian CBD. Xinzhou Tongchuanghui is a commercial community that features the technological and cultural sectors. Outside the office buildings, you can find many Euro-American style street snap backgrounds with colourful design. Ready to pose for the camera?



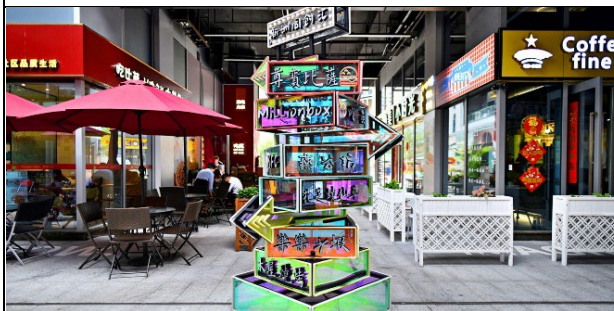
Showcasing the theme of "Dream Painting", the streets and alleys are rich in cultural and artistic vibes with bright, colourful and creative decorations. The zebra crossings, street signs, retro red post boxes, telephone booths, and ice cream vans in the Western style streets would make you think you were in Europe or the US. It is such a piece of cake to take beautiful pictures there and post them online for likes.



Brightly coloured and eye-catching installations can be seen everywhere, even at stairs and corners. Different scenes can be found at different spots. The photos are never the same. And you would never get bored!



Walking into the Office Mall building, you would think you were at an art exhibition. Unlike conventional Grade A office buildings, it has a spacious lobby with plenty of natural light. There is a stepped rest space in the middle, with white clouds hanging in the air and a spiral staircase. Every detail of these helps inspire creativity and ideas. If you think you know what an office building can be, think again.



After many photos, you may want to grab a drink at Xinzhouli Street. The short alley accommodates many eateries. You can have pizza, barbecue, desserts, or coffee here. Get refreshed and get ready for more photos!

【Xinzhou Tongchuanghui】

Address: 2008 Xinzhou South Road, Futian District, Shenzhen

Getting there:

1. From downtown area: Take Shenzhen Metro Line 3. Get off at Yitian Station and walk about 10 minutes from Exit D.
2. From East Rail Line Lo Wu Station: Get to Shenzhen Metro Luohu Station on foot. Take Line 1 and then transfer to Line 3 at Laojie Station.
3. From East Rail Line Lok Ma Chau Station: Get to Shenzhen Metro Futian Checkpoint Station on foot. Take Line 4 or Line 10. Transfer Line 7 at Fumin Station and then transfer Line 3 at Shixia Station.
4. From High Speed Rail Futian Station: Get to Shenzhen Metro Futian Station on foot and take Line 3.

The above information is for reference only and is subject to change without prior notice