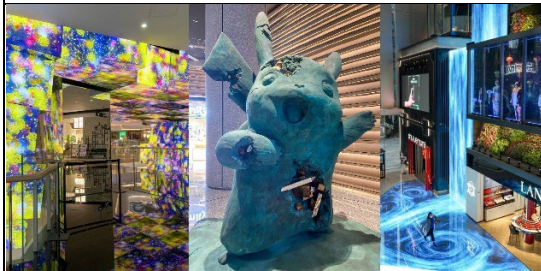


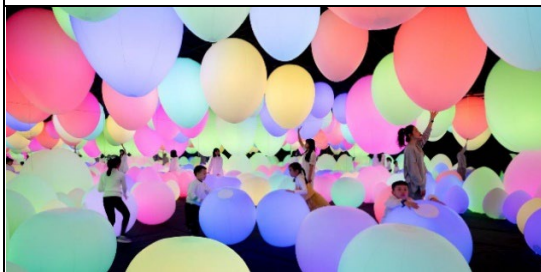
【Shenzhen】 C Future City
Technology, art and hip shopping in one place!



Characterised by its technological and artistic offerings, C Future City stands out from the rest of the shopping malls in Futian District, Shenzhen, and has since its inception served as a photo-worthy landmark for young consumers who enjoy technology and art. With “young fashion and art” in mind, this futuristic shopping mall—also known as a museum of popular technology and art—has much extraordinary experience to offer within an area of 1,300,000 square metres under the theme of “art, technology, nature”.



Boasting works from international leading artists around every corner of the mall as well as gigantic and eye-catching installation art pieces, C Future City has quickly become the new black for the fashionable minds. The Waterfall and People Create Vortices, a three-storey masterpiece crafted by the famous artist collective teamLab, is an incredible sight to behold upon entry to the premises as the flow of water changes with the movements of people. Located next to this magnificent “waterfall” is a huge cubic installation filled with flowers, which either wither or bloom when someone comes near or otherwise. What a fascinating visual effect to see! Alongside the exterior staircase is French master Patrick Blanc’s Vertical Garden featuring playful effects where the waterfall and flowers interact with passers-by. Daniel Arsham’s 3.2-metre-tall Bronzed Crystallized Pikachu on the B2 floor is equally striking.



teamLab, which has risen to a global phenomenon for its interactive multimedia art exhibitions, has established a permanent gallery in C Future City. By integrating art, science, technology, design and the nature world, the creations of teamLab are internationally praised as one of the “Top 10 must-see exhibitions”. It navigates the confluence of art and technology to explore the relationship between humans and the world, while transcending the physical boundaries between humans and art.



At teamLab, where artworks are the joint efforts of visitors, endlessly evolving creations are woven into an ever-changing world of art. As an educational project and experimental platform underpinned by the concept of co-creation, teamLab Future Park in Shenzhen is a photogenic spot for trend lovers and social media, and a family-friendly destination. The 2,000-square-metre venue is divided into Athletics Forest and Co-creation zones, featuring much sought-after works, such as Graffiti Nature - Beating Mountains and Valleys, Red List and Light Ball Orchestra, that have taken the world by storm. In the wonderland of teamLab, technology and art intertwine to serve as a bridge for parent-child interactions.

Shop L309-310, L3, C Future City



The MMC's first flagship store in the world is a must-go in the mall. This pop toy brand was founded by MINDstyle, a renowned pop toy designer and manufacturer based in Los Angeles and Shenzhen. As a global powerhouse of creativity, development and production, the company has amassed a wide range of pop culture collectibles, including FUNKO, Loungefly (apparel and accessories) and BAIT (fashionable streetwear), and launched in-depth collaborations with world-famous brands and artists, such as Ron English, the American godfather of street art. Inside the store of over 3,000 square metres, you can find pop arts from all aspects of entertainment, including film, television, games, celebrities, animation, comics, music, and sports. With everything from fashion brands and merchandises to limited items co-branded with artists and large-scale figures, MMC is undoubtedly a mecca for toy collectors and gift-seekers.
Shop L208, L2, C Future City

【C Future City】

No. 9283, Binhe Avenue, Futian District, Shenzhen

Getting there:

1. From downtown area: Take Shenzhen Metro Line 9. Get off at Xiasha Station and walk about 5 minutes from Exit B.
2. From East Rail Line Lo Wu Station: Get to Shenzhen Metro LuoHu Station on foot. Take Line 1 and then transfer to Line 9 at Chengongmiao Station.
3. From East Rail Line Lok Ma Chau Station: Get to Shenzhen Metro Futian Checkpoint Station on foot and take Line 4. Transfer to Line 7 at Fumin Station and then transfer Line 9 at Chengongmiao Station.
4. From High Speed Rail Futian Station: Get to Shenzhen Metro Futian Station on foot. Take Line 11 and then transfer to Line 9 at Chegongmiao Station.

The above information is for reference only and is subject to change without prior notice.