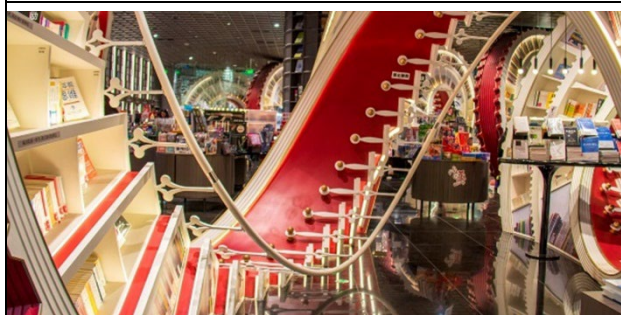


【Shenzhen】 Zhongshuge Bookstore

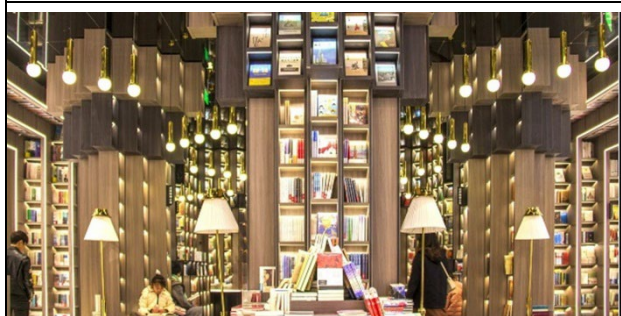
A photo spot with giant spiral bookshelves and wisdom staircases!



Known as “China’s most beautiful bookstore”, Zhongshuge easily becomes a hotspot for local social media influencers and literature enthusiasts when it opens in a city. Located at OH BAY, the Shenzhen branch is Zhongshuge’s 32nd store. Having a space of 12,000 square feet, the store houses approximately 45,000 books. The most striking feature of bookstore is its unique and symmetrical architectural design, while the most eye-catching feature is the giant spiral bookshelf that runs through the bookstore, resembling a gear wheel when viewed from the side and a clock dial when viewed from the front. The books are placed on the red spiral shelves like giant gears, symbolising the progress of mankind.



Another special feature of the bookstore is the cascading wall of books, forming a wisdom staircase that stacks up level by level to reach the dome. The ceiling is designed as a mirror, forming a book maze with the stairs. The bookstore is divided into two floors, with a concept area, a forum area, a children’s reading area and a leisure area, each of which is designed with subtle ingenuity. Walking in the bookstore, you will be surrounded by a sea of books, as if you were in the library in Harry Potter’s magical castle.



The bookstore has a wide variety of books, classified and displayed in an intuitive manner. Bestsellers and recommended books in different categories are clearly displayed on the shelves. In a conspicuous position at the bookstore entrance, comic-themed books are displayed separately, attracting many animation and comic book fans. Meanwhile, the children’s reading area is designed with childlike fun, making it a suitable space for parents and children to read together. Apart from books, the bookstore also has many art displays. There is also a restaurant where you can enjoy reading over a cup of coffee.

【Zhongshuge】

Address: L1-021, East Waterfront of OH BAY, Bao'an District, Shenzhen

Getting there:

1. From downtown area: Take Shenzhen Metro Line 5. Get off at Linhai Station and walk about 5 minutes from B2.
2. From East Rail Line Lo Wu Station: Get to Shenzhen Metro LuoHu Station on foot. Take Line 1 and then transfer to Line 5 at Qianhaiwan Station.
3. From East Rail Line Lok Ma Chau Station: Get to Shenzhen Metro Futian Checkpoint Station on foot and take Line 10. Transfer to Line 11 at Gangxia North Station and then transfer to Line 5 at Qianhaiwan Station.
4. From High Speed Rail Futian Station: Get to Shenzhen Metro Futian Station on foot. Take Line 11 and then transfer to Line 5 at Qianhaiwan Station.

The above information is for reference only and is subject to change without prior notice.